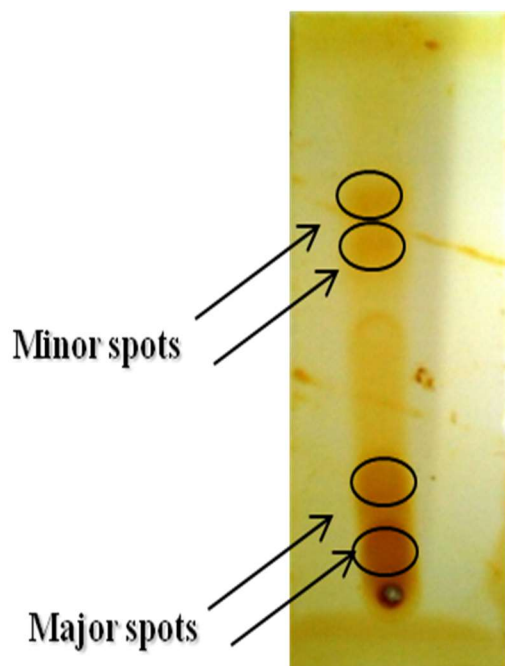
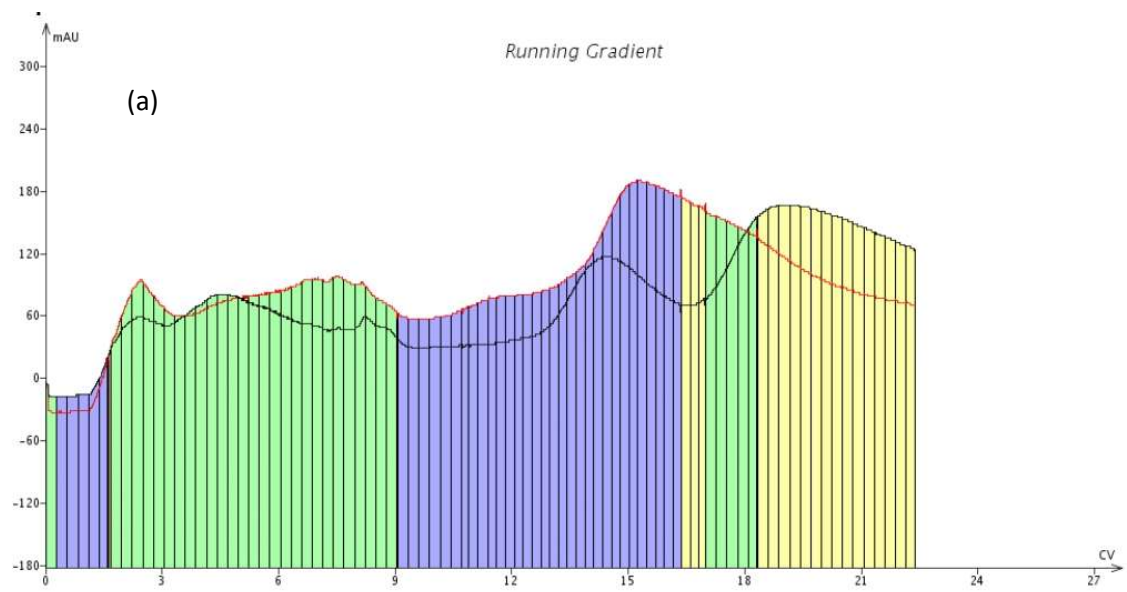


## Supporting Information



*Figure S1.* TLC of crude extract of *Streptomyces cirratus* IHBB 10198 in 90% ethyl acetate and 10% hexane.



Gradient			
	Solvents Mix		Length (CV)
1	A/B	50%	3.0
2	A/B	50% - 60%	3.0
3	A/B	60% - 70%	3.0
4	A/B	70% - 80%	5.0
5	A/B	80% - 90%	5.0
6	A/B	90% - 100%	5.0
7	A/B	100%	3.7

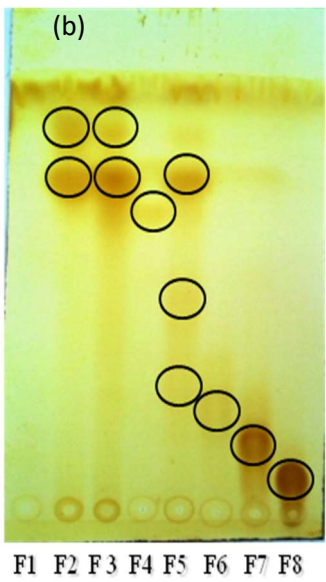


Figure S2. Flash column chromatogram of defatted ethyl acetate extract of *Streptomyces cirratus* IHBB 10198 over Snap 50 g silica cartridge (a) and TLC of fractions F1 to F8 from flash chromatography of *Streptomyces cirratus* IHBB 10198 in 90% ethyl acetate and 10% hexane

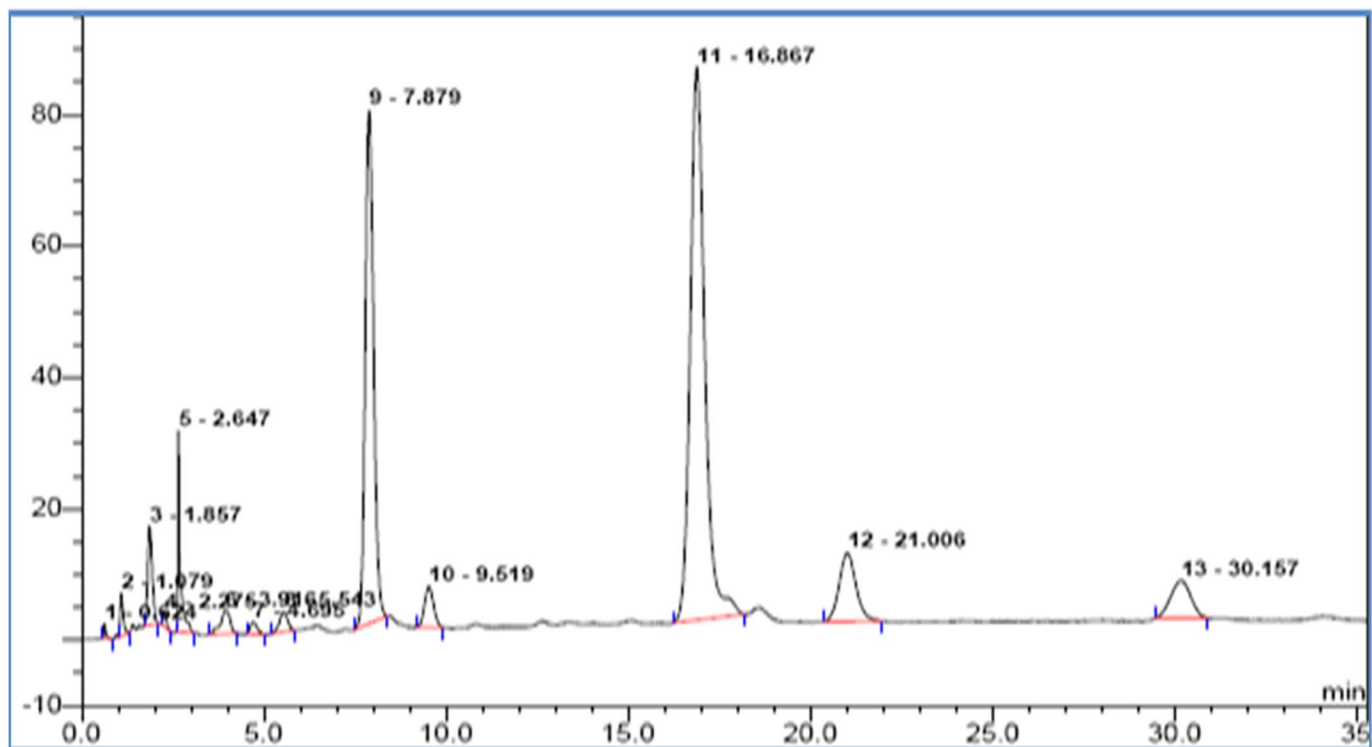


Figure S3. Analytical HPLC on RP-18 (5 $\mu$ m) column, Dionex system, Solvent system: 10% Acetonitrile and 90% Water at 210 nm, Flow rate: 1 ml/min

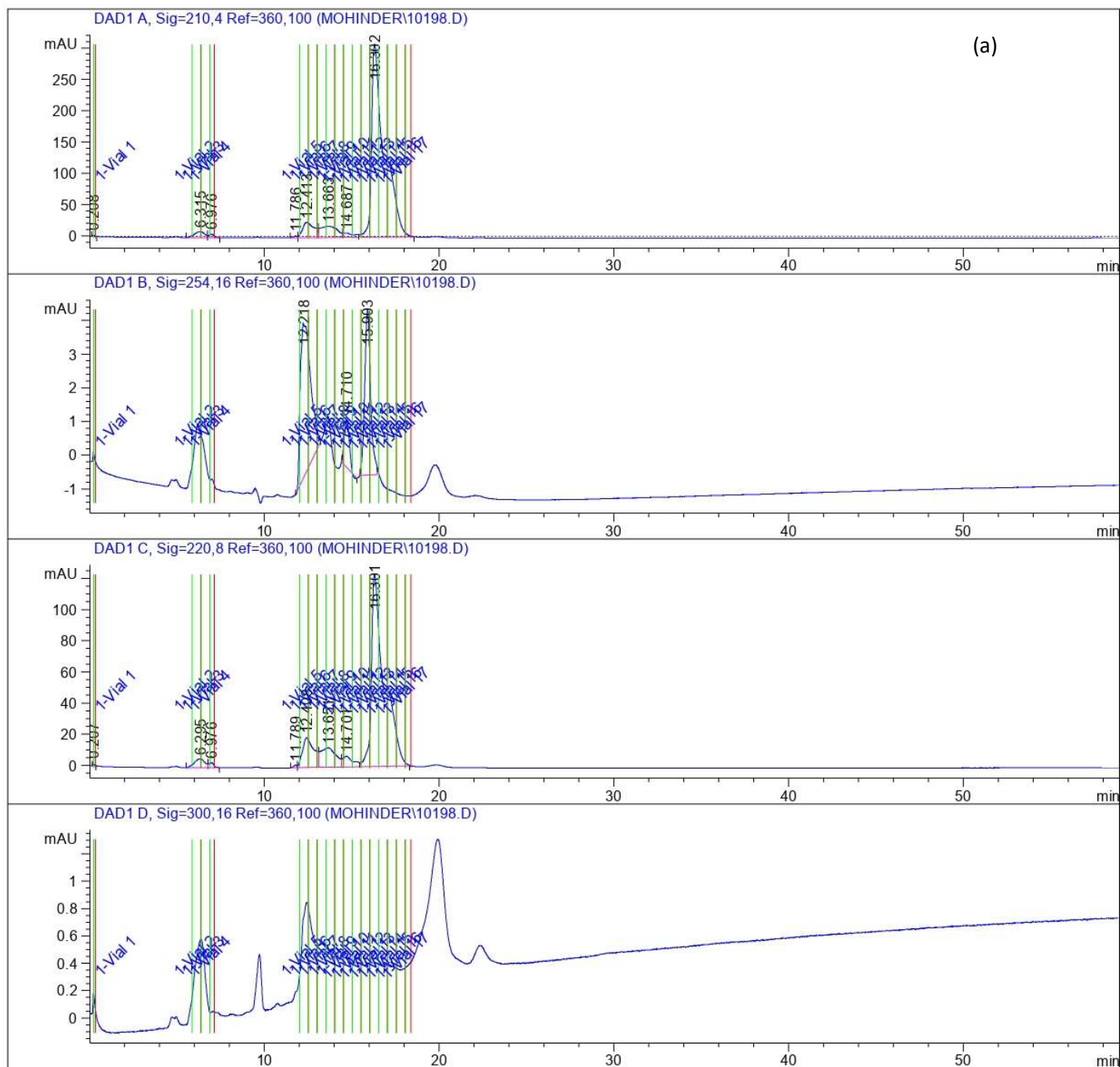


Figure S4 (a). Preparative HPLC of F6 fraction from flash chromatography (a), Analytical HPLC of F4 fraction from preparative HPLC on RP-18 (5 $\mu$ m) column, Dionex system Flow rate: 1 ml/min, Solvent system: 10% acetonitrile and 90% water (b).

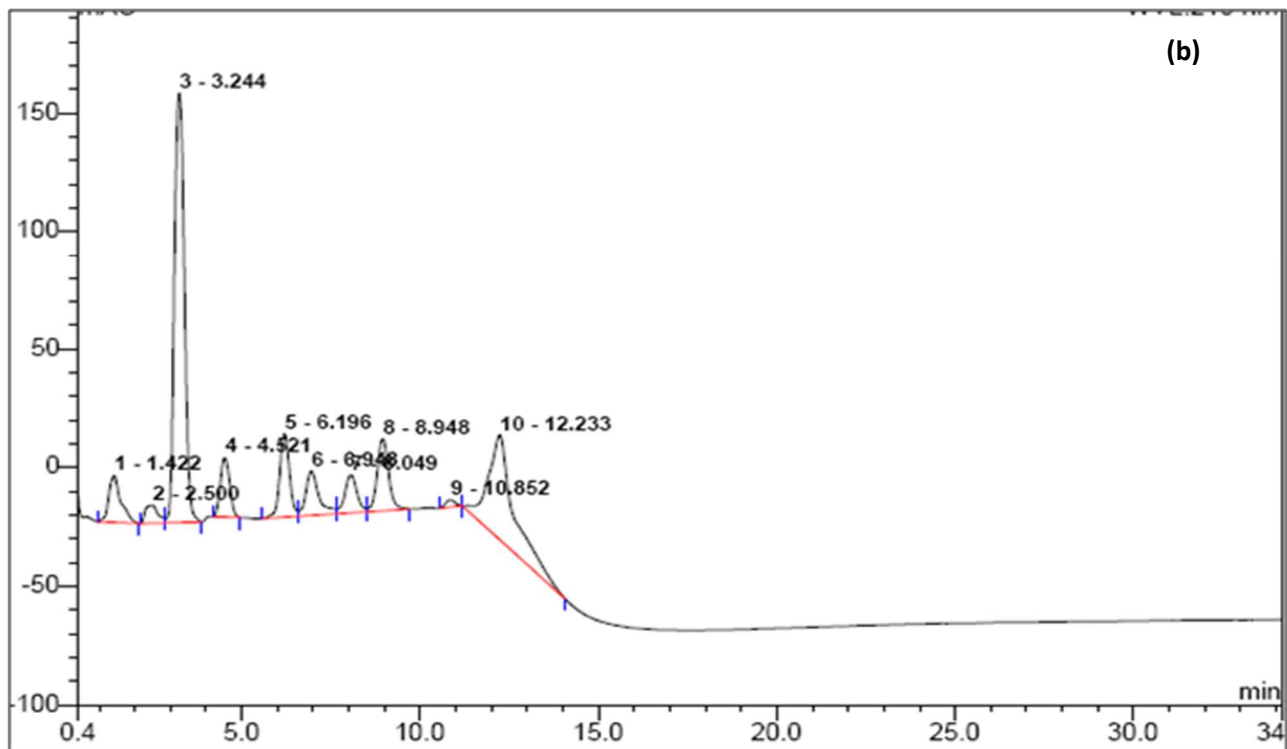


Figure S4 (b) Analytical HPLC of F4 fraction from preparative HPLC on RP-18 (5 $\mu$ m) column, Dionex system Flow rate: 1 ml/min, Solvent system: 10% acetonitrile and 90% water .

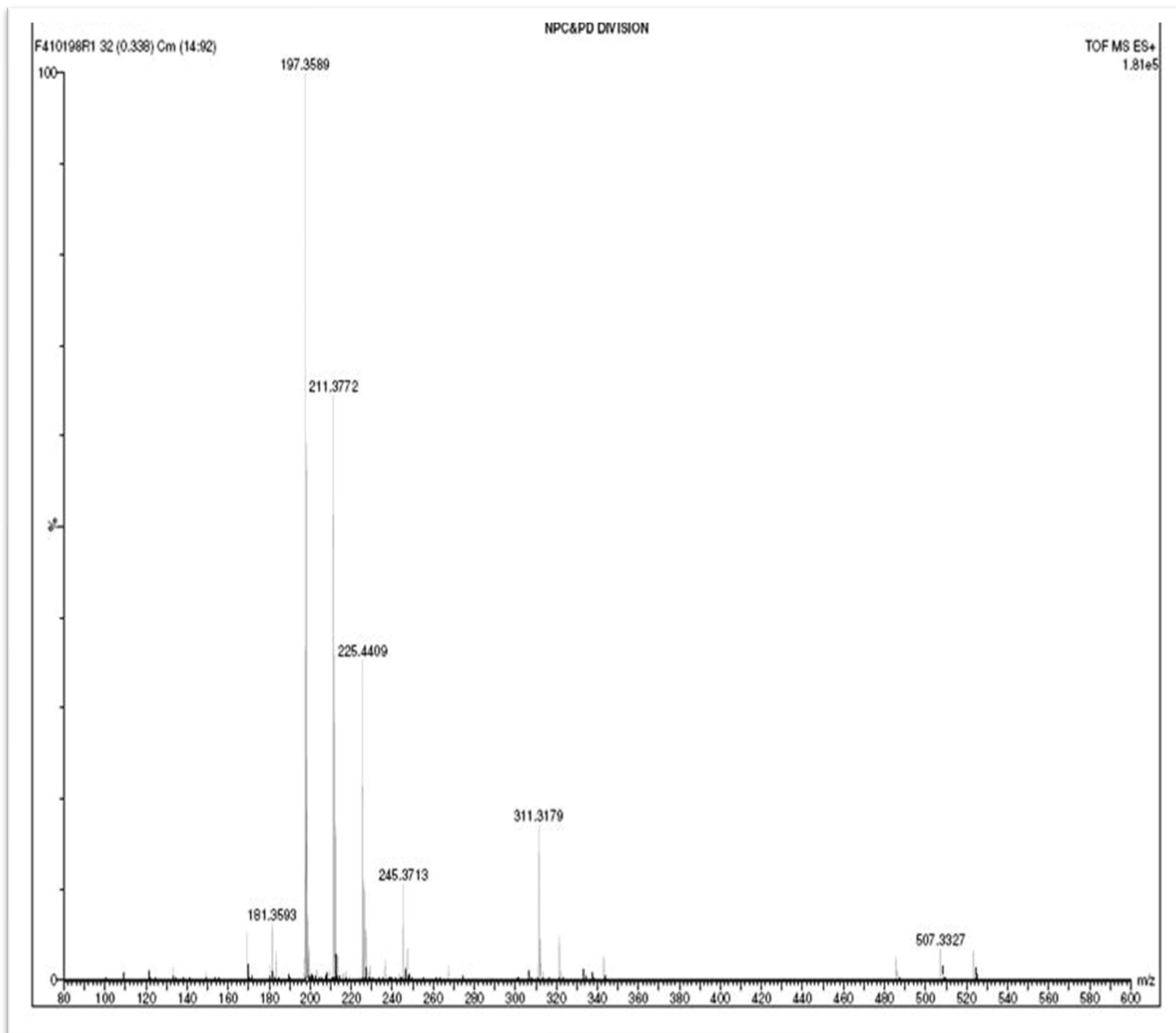


Figure S5. Mass data of cyclotetrapeptide from *Streptomyces cirratus* IHB B 10198

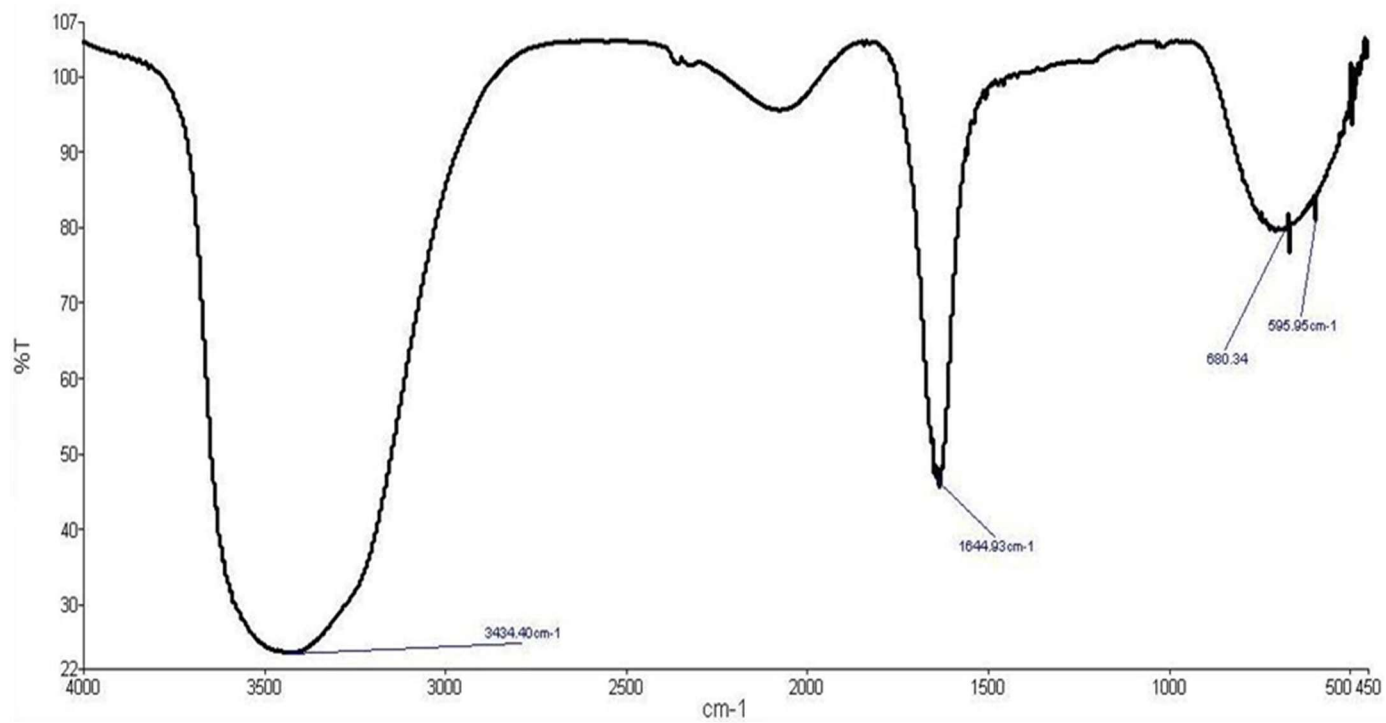


Figure S6. FT-IR spectrum of cyclotetrapeptide from *Streptomyces cirratus* IHBB 10198

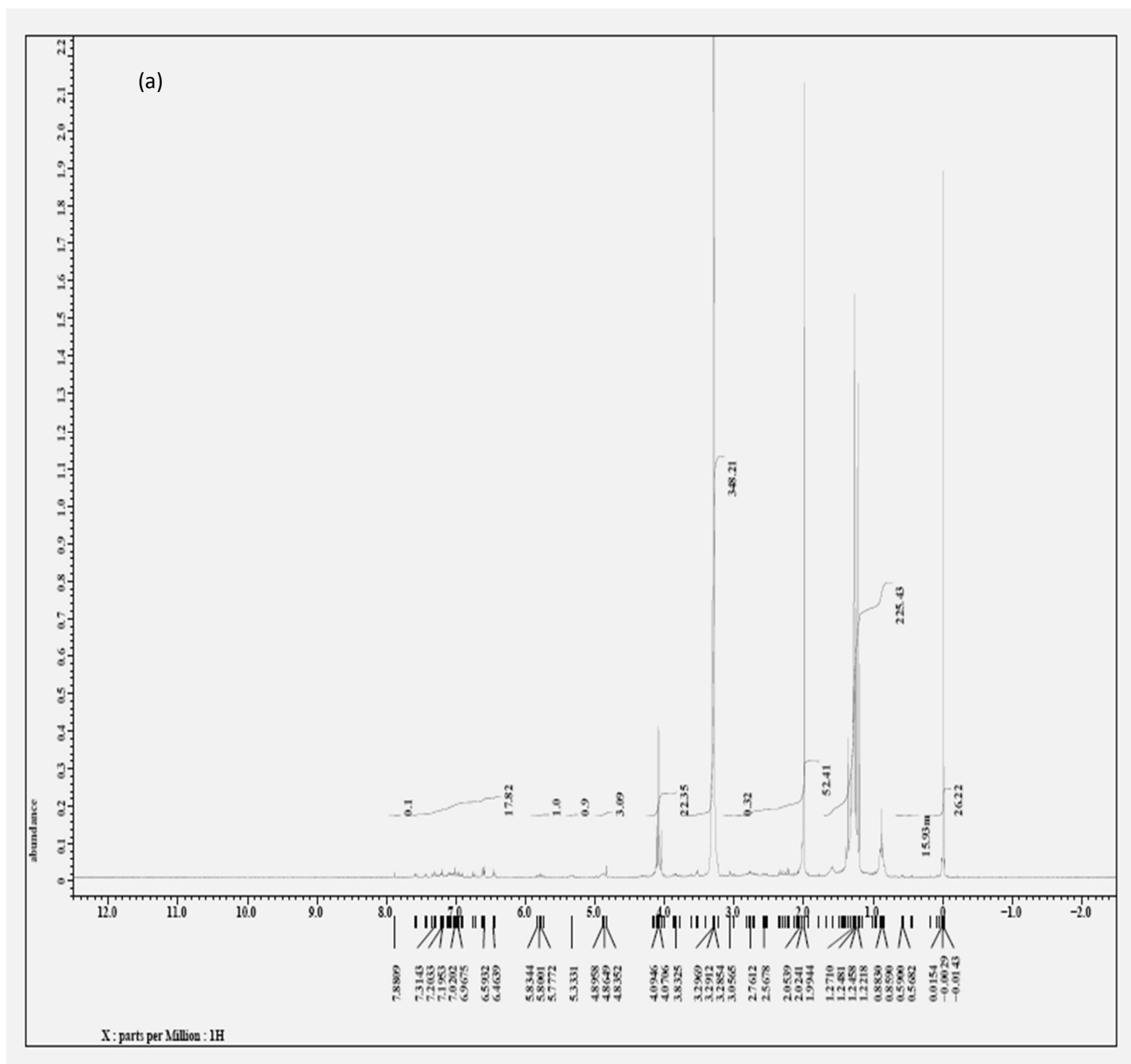


Figure S7 (a).  $^1\text{H}$  NMR of cyclotetrapeptide from *Streptomyces cirratus* IHB B 10198 in  $\text{CD}_3\text{OD}$

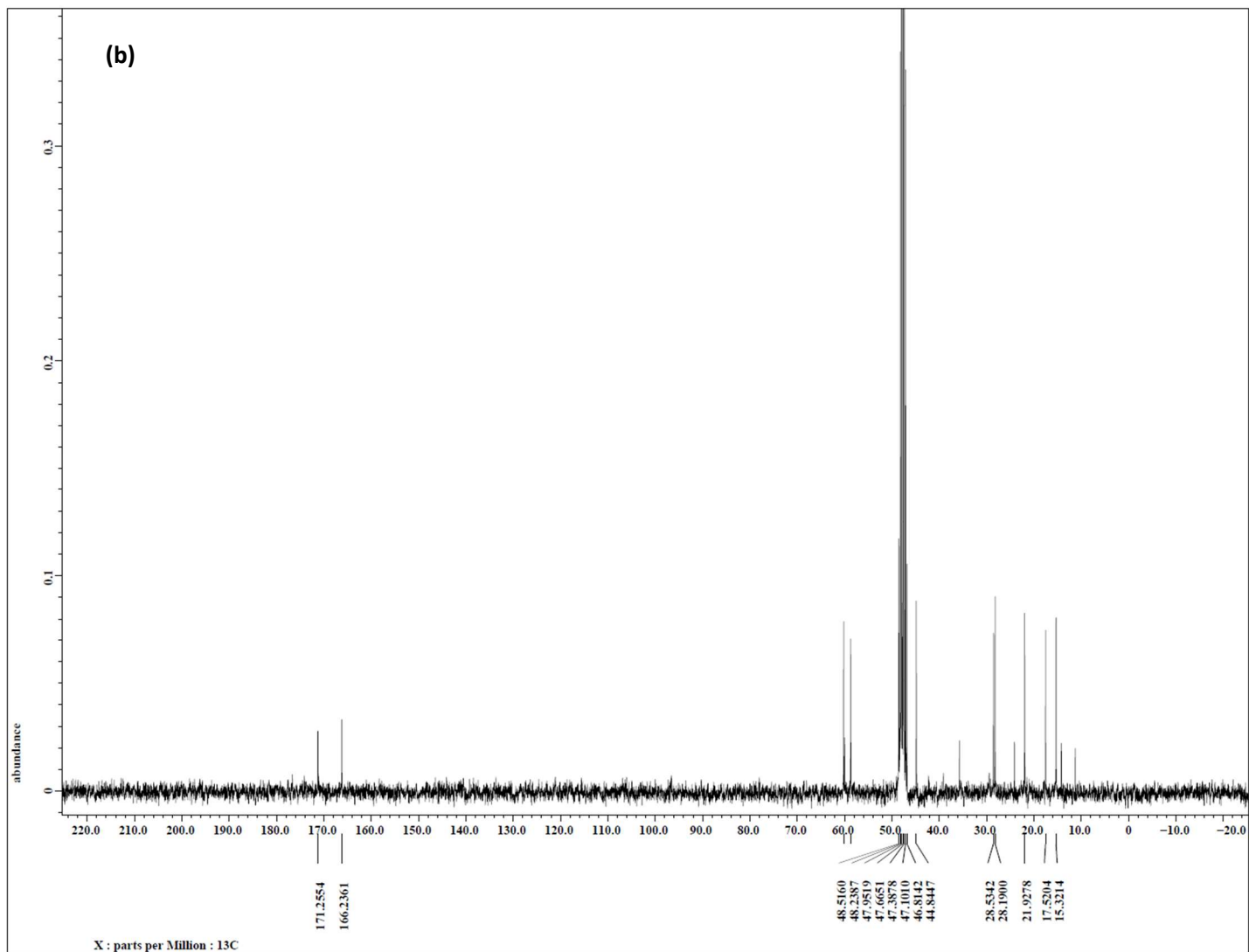


Figure S7 (b).  $^{13}\text{C}$  NMR of cyclotetrapeptide from *Streptomyces cirratus* IHB B 10198 in  $\text{CD}_3\text{OD}$ .