

VIETNAM ACADEMY OF SCIENCE AND TECHNOLOGY

Vietnam Journal

of MECHANICS

Volume 35 Number 2

ISSN 0866-7136

VN INDEX 12.666

2
2013
35th Anniversary

NUMERICAL SIMULATION OF A WAVE ENERGY CONVERTER USING LINEAR GENERATOR

Dang The Ba

University of Engineering and Technology, VNU

144 Xuan Thuy, Cau Giay, Hanoi, Vietnam

E-mail: badt@vnu.edu.vn

Abstract. This paper presents results of numerical simulation for a wave energy converter using linear permanent magnet generator. The use of linear permanent generator has advantages of simple structure, minimizing mechanical loose... On the base of mechanics model, a system of equations describing the operation of the device under linear potential wave was obtained. The magnetic field in generator was calculated by FlexPDE software. The system of movement equations was numerically solved with Matlab. Various calculations were performed with different parameters of wave conditions and device's structures to determine the device's configuration for a 300 W output power for the offshore wave condition in South-Central offshore of Vietnam. The results also show potential of developing the wave energy conversion to meet the energy demand in some coastal and island regions of Vietnam.

Keywords: Wave energy convertor, linear electrical generator, permanent magnet generators.

1. INTRODUCTION

1.1. Ocean wave energy

In terms of fossil energy resource depletion and sustainable development, the use of renewable energy, including wave energy is inevitable. The global power potential represented by waves is estimated to be 1–15 TW [1]. Technically, the potential available in Sweden is estimated to 5–10 TWh annually which can be compared to Sweden's total electric energy consumption during one year, 144 TWh [1].

In Vietnam, according to the latest studies, the total wave power in the coastal zone is about 58677.02 MW while the total electric power generation capacity of Vietnam in 2010 was 12200.00 MW [2, 3]. The region has great potential for wave energy in Vietnam is South-Central offshore. The annual average wave energy flux for this region is over 30 kW/m and reaches the maximum value of about 100 kW/m in December. This is a good energy resource to meet the energy demand of the development.

1.2. Wave energy conversion technologies

Up to day, different types of wave energy conversion principles are illustrated, which have carefully been documented and presented as in Fig. 1 [4]. So far most researchers have

concentrated on the hydrodynamic aspects of different converters. The two best known concepts are the IPS buoy [5] and the AquaBouy [6, 7, 8]. These devices all require an intermediate mechanical structure to transform the kinetic energy of the buoy to that compatible with the conventional turning generator, such as pump and turbine systems. However, the complexity in structure increases mechanical energy loss, and it is very hard to get the generators and related accessories available to fit the device's characteristics. They cause reliability problems when operating in extreme marine environment conditions and this is the biggest barrier to the success of the project to manufacture wave energy converter in real field conditions [4-8].

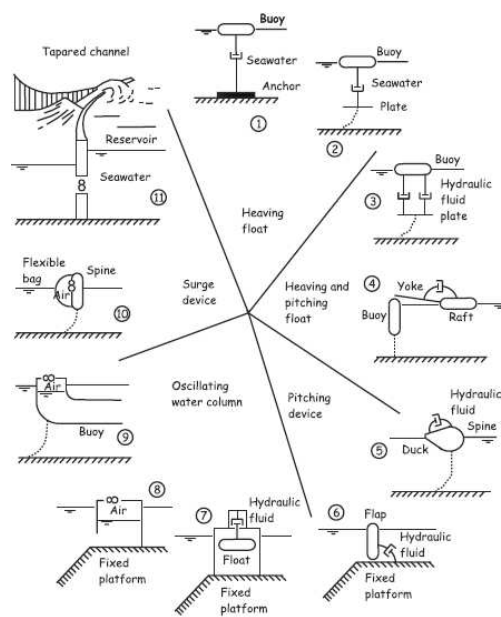


Fig. 1. Illustration of different principles for wave energy absorption

Recently, a number of different working principles to convert wave energy using linear generator have been presented and described [9, 10, 11]. Particularly, the direct conversion using point absorbed and three-phase synchronous three-slide linear generator have been simulated for 10 kW units [11]. This structure has the advantage of simple, without many intermediate structures, less mechanical energy loss. Permanent magnet generator helps more dependable operation in hard conditions of the marine environment.

For starting develop wave energy convertor that is suitable with wave conditions and using purposes in Vietnam, this study deals with a 300 W wave energy convertor. This device consists of a buoy connects directly with a linear permanent magnet generator placed at the sea bottom. The generator consists of a two-slide piston with surface mounted permanent magnets. The piston is connected to a buoy by a rope. Stator is situated outside piston with symmetric winding. Reciprocal movements of the piston induce currents in stator winding.

2. CONCEPT MODEL AND MODELING

2.1. Concept model

The concept and operation of the device are described in Fig. 2a and Fig. 2b. The piston is covered with rows of permanent magnets of alternating polarity. The magnet rows are separated with aluminum spacers. The stator is made of laminated electrical non-oriented steel sheets and isolated copper conductors. The conductors are wound in slots (holes) in the stator steel and forms closed loops or coils. When the buoy oscillates in heave mode under wave forces, it makes piston move relative to the stator. Reciprocate movements of the piston induce currents in stator winding. The current in turn affects the piston with Lorentz force opposite to the direction of motion. The oscillating model of the device is presented in Fig. 2c.

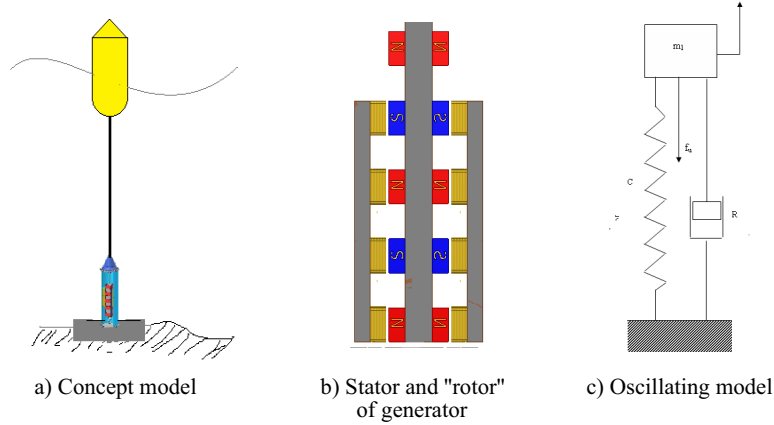


Fig. 2. Device's model

2.2. Governing equations

- Linear wave theory

Ocean waves are very complex. In this study, the analysis is carried out for the linear wave theory only. Then the wave equation has the form [12]:

$$\eta(t) = \eta_a \cos(\omega t - kx). \quad (1)$$

In which, $\eta(t)$ is the surface water displacement related to still water level, η_a is the wave amplitude, ω is angular frequency, k is wave number.

- Buoy's motion

We select a point-absorbed system of mass m and model its response to monochromatic wave extinction. The dynamic equation of motion for a heaving structure is [12]

$$m_{b1}\ddot{s}_b(t) = F_{b,e}(t) + F_{b,r}(t) + F_{b,b}(t) + F_{b,drag}(t) + F_{b,f}(t) + F_{b,u}(t), \quad (2)$$

where s_b is the vertical distances of displacement from equilibrium of the buoy, m_{b1} is the mass of the buoy, $F_{e,b}(t)$ is the excitation force, $F_{r,b}(t)$ is radiation force, $F_{b,b}(t)$ is

the net buoyancy force, $F_{b,drag}$ is the drag force, $F_{b,f}$ is the friction loss force, $F_{b,u}$ is the electromagnetic load force from generator.

For a buoy of cylinder shape with the half sphere at the end, the expression for the forces has the forms [12]:

$$F_{e,b}(t) = \exp(-kl)\kappa_{33}\rho g S_{wb}\eta_a \cos(\omega t) \quad (3)$$

$$F_{r,b} = -m_{33}\ddot{s}_b(t) - R_{33}\dot{s}_b(t) \quad (4)$$

$$F_{b,b} = -S_{b,b}s_b(t) \quad (5)$$

$$F_{b,f} + F_{b,\nu} = -(R_{b,f} + R_{b,\nu})\dot{s}_b(t) - 0.5C_B\rho A_B|\dot{s}_b(t)|\dot{s}_b(t) \quad (6)$$

In which, $m_{33} = (2\pi/3)r^3\rho\mu_{33}$ is added mass, ρ is water density, μ_{33} is added mass coefficient, $R_{33} = \exp(-2kl)\omega\rho(2\pi/3)a^3\varepsilon_{33}$, ε_{33} is damping coefficient, κ_{33} is non-dimensionalised excitation force, $S_{b,b} = \pi\rho g r^2$ is buoyancy stiffness, $R_{b,f}$ is friction resistance coefficient, $R_{b,\nu}$ is viscosity resistance coefficient, $R_{b,\nu} = 0.5C_B\rho A_B|\dot{s}_b(t)|$ is drag resistance [9].

- Electromagnetic field

In general, the electromagnetic field in the generator is described by Maxwell's equations. In this study, magnetic field of permanent magnets is calculated by a stationary mode by using the equations as follow [10,11]:

$$\nabla \times \mathbf{H} = \mathbf{J} + \frac{d\mathbf{D}}{dt}, \quad (7)$$

$$\mathbf{B} = \mu\mathbf{H}. \quad (8)$$

Where \mathbf{H} is the magnetic field, \mathbf{B} is the magnetic flux density. \mathbf{J}_{pm} is a factious current density that models the permanent magnets, μ is magnetic permeability.

The above equation needs more some initial and boundary conditions. For the generator in this study, restricting the field problem to two dimensions of magnetic field of permanent magnet, an expression for the field can be derived by using the magnetic potential vector which only z -component, \mathbf{A}_z , being non-zero. The equation for this component has the form

$$\nabla \cdot \left(\frac{\nabla \mathbf{A}_z}{\mu} \right) = \mathbf{J}_{pm}. \quad (9)$$

- Circuit theory

In this study, a simplest load conected to generator is purely resistive load as in Fig. 3. In this figure, θ is internal EMF of the generator from the coils (armature winding), R_g and L_g are resistance and inductance of the coils respectively, R_L is resistance of the load, I is current in the circuit [10, 11].

The terminal voltage V_L , for the circuit can be written as,

$$R_L I = \theta - L_G \frac{dI}{dt} - R_G I. \quad (10)$$

The electromotive force in each coil, θ for this linear generator can be written as

$$\theta = -(-1)^{\left(fix\frac{x(t)}{2a}+1\right)} nlB_n b v(t). \quad (11)$$

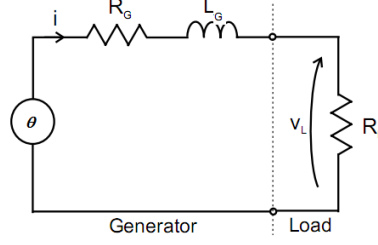


Fig. 3. Generator connected to a resistive load

The output power of device is calculated by

$$P = I^2 R_L. \quad (12)$$

The electromagnetic (Lorentz) force acting on piston by one coil, $F_{b,u}(t)$ is

$$F_{b,u}(t) = nlbB_n I. \quad (13)$$

In which, n is loop number of wire in a unit length of a coil, l is length of a coil, B_n is magnetic flux at air cap, $x(t)$ and $v(t)$ are displacement and velocity of piston respectively, a and b are the dimensions of cross section of the coil.

2.3. Tools and program development

The system of equations (1-13) are used to solve for obtaining the state variables of the device such as buoy's displacement, buoy's velocity, current, electromotive force, output power... depending on the device's and wave's parameters.

The algorithm for solving their equations is presented in Fig. 4.

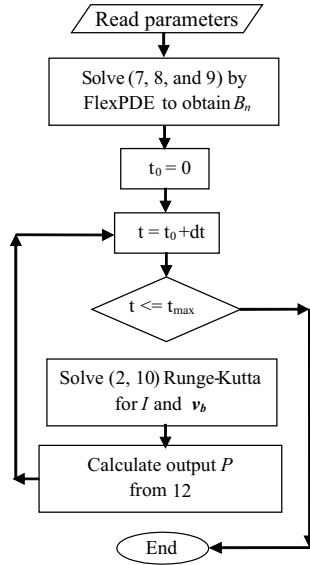


Fig. 4. Algorithm flow chat

Table 1. Parameters of device

Parameter	Value	Unit
Coil dimension	0.1x0.03x0.03	m
Magnet dimension	0.1x0.03x0.03	m
Generator diameter	0.15	m
Number of coil	24	
Number of magnet	152	
Magnet's magnetization, B0	1.4	T
Buoy radius	0.4	m
Buoy length	2	m
Buoy mass	200	kg

From the flow chat we can see that, the steady state magnetic field problem is solved once by FEM method in FlexPDE software. The output is magnetic flux field, \mathbf{B} . This result is then used to calculate magnetic flux at air cap, B_n for transient time domain problem, (Eqs. (2) and (10)). The transient time domain model is then solved with time progressive by the semi-implicit Runge-Kutta method in Matlab.

3. RESULTS AND DISCUSSIONS

The program after the test was used to simulate, explore basic characteristics of the device with a capacity of about 300 W. The wave period and height are based on the observation data in the South-Central offshore of Vietnam. The basic parameters are presented in Tab. 1.

With a wave of 2 m height and 7.0 s period, the simulation results are presented in figures 5-10. Fig. 5 shows the displacement of the buoy and wave. Fig. 6 shows the velocity of buoy vs. time. Fig. 7 shows the excitation and Lorentz forces. Figures 8-10 present the electromotive force, output power and cumulative power from device vs. time.

The simulation results were compared with the experimental results of M. Eriksson [11] (Fig. 11) and showed the compatibility in quality.

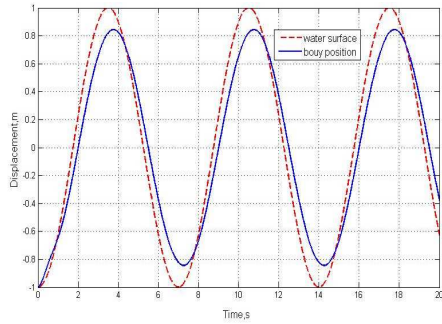


Fig. 5. Displacement of wave and buoy

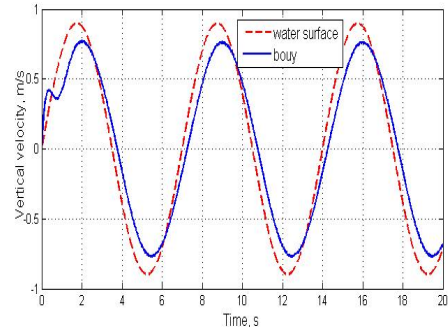


Fig. 6. Vertical velocity of buoy and water surface

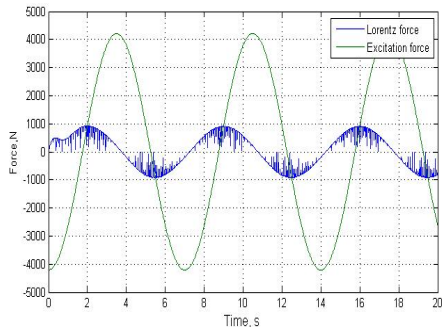


Fig. 7. Excitation and Lorentz force

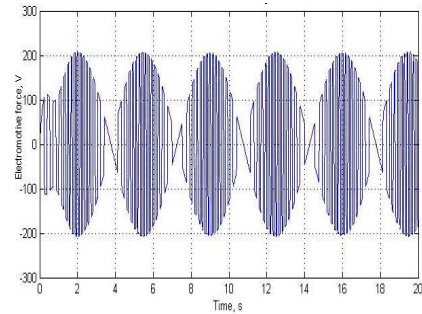


Fig. 8. Electromotive force of generator

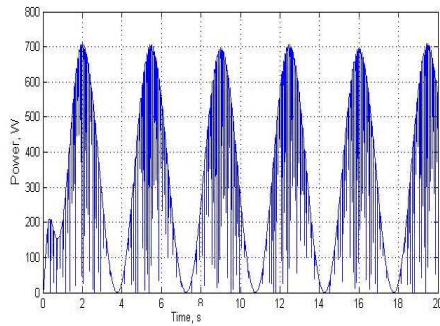


Fig. 9. Output Power

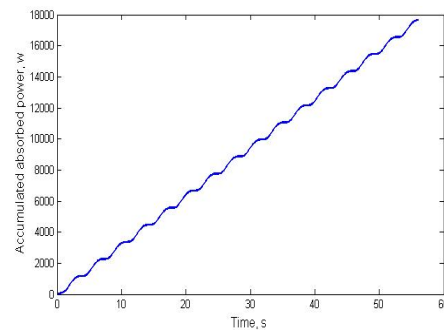


Fig. 10. Cumulated absorbed power

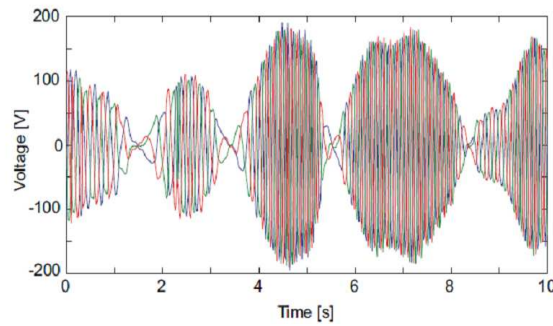


Fig. 11. Output voltages in experiment of M. Ericksson [11]

The average absorbed power of the device under different wave conditions are presented in Tab. 2. From these results, we can see that the output power are linear with the wave height.

Table 2. Output power vs. wave conditions

Wave height (m)	period (s)	P TB (w)
0.7	5.7	57.84
0.8	5.8	72.97
1.0	6.2	100.95
1.4	6.6	175.18
1.6	7.0	205.42
1.8	7.4	234.43
2.0	7.8	263.56
2.4	8.3	336.07
2.6	8.6	366.22
3.0	9.1	434.78

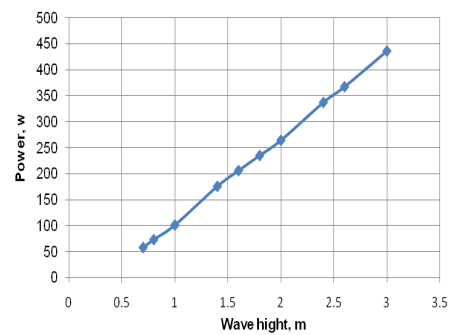


Fig. 12. Average output power vs. wave high

4. CONCLUSION

Wave energy data of Vietnam was analyzed. From the previous investigation on potential use of marine energy resource of Vietnam, it shows that the South-Central offshore has advantages of wave energy exploitation than the others. This region has a high energy demand, especially for social-economic development in the coastal zone and islands while other conventional energy sources can not meet the requirement. Therefore the South-Central offshore is the appropriate area for research and development equipment to convert wave energy.

A simple configuration device including a buoy directly connected to a generator was simulated by a two ordinary differential equations and solved by Runge-Kutta method in Matlab. The first equation describes the motion of the buoy; the second equation describes the electromotive force of the generator. The magnetic flux of the permanent magnets in the generator was simulated by using the Maxwell equations in FlexPDE program.

A device with output power of about 300 W was simulated. The simulation results were generally consistent with the experimental results of M. Eriksson [11]. The model was used to investigate the dependency of the device output power on the device parameters and wave condition. These results can be used for designing, manufacturing prototype device in the laboratory and field experiment.

ACKNOWLEDGEMENT

This study is completed with the partial funding from the project “Researching, designing and manufacturing a prototype model of a smart source using renewable energy”, Vietnam Academy of Science and Technology.

REFERENCES

- [1] A. Clement, P. McCullen, A. Falcao, A. Fiorentino, F. Gardner, K. Hammarlund, G. Lemonis, T. Lewis, K. Nielsen, S. Petroncini, P. Schild M.-T. Pontes, B.-O. Sjoström, H. C. Sorensen, and T. Thorpe, Wave energy in europe: current status and perspectives, *Renewable and Sustainable Energy Reviews*, **6**(5), (2002), pp. 405–431.
- [2] Ministry of Science and Technology, *Study on evaluation of potential marine energy sources and propose of exploitation approaches*, KC.09.19/06-10 Project report, (2010).
- [3] Institute of Mechanics, Vietnam Academy of Science and Technology, *Study on potential use of marine energy sources of Vietnam*, Project report, (2003).
- [4] G.M. Hagerman, T. Heller, Wave energy: a survey of twelve near-term technologies, *Proceedings of the international Renewable Energy Conference*, Honolulu, Hawaii, 18-24 September, (1988), pp. 98–110.
- [5] G. Fredriksson, *Ips wave power buoy*, Wave Energy R&D, Cork, Ireland, (1993).
- [6] B. O. Sjöström, *The past, the present, and the future of the hose-pump wave energy converter*, First European Wave Energy Symposium, Edinburgh, (1994).
- [7] Dang the Ba, Dinh Van Manh, Pham Thi Minh Hanh, *Modeling and simulation of a heaving-buoy wave-energy convertor*, International Conference on Engineering Mechanics and Automation (ICEMA 2010), Hanoi, July 1-2, (2010).

- [8] Dang The Ba and Dinh Van Manh, *Numerical survey on the absorbed energy by point absorber wave energy conversions*, Proceeding of National Science Conference on Fluid Mechanics, Danang, (7/2009).
- [9] M. Ericksson, *Modeling and experimental verification of direct drive wave energy conversion*, Uppsala Dissertation, ISSN 1651-6214, (2007).
- [10] I.A. Ivanova, O. Ågren, H. Bernhoff, and M. Leijon, Simulation of wave-energy converter with octagonal linear generator, *IEEE Journal of Oceanic Engineering*, **30**(3), (2005), 619–629.
- [11] M. Eriksson, R. Waters, O. Svensson, J. Isberg, M. Leijon, Wave power absorption: Experiment in open sea and simulation, *Journal of Applied Physics*, **102**(8), 084910, (2007).
- [12] F. Johannes, *Ocean waves and oscillating systems: Linear interactions including wave-energy extraction*, Cambridge University Press, (2002).

Received July 04, 2012

CONTENTS

	Pages
1. Dang The Ba, Numerical simulation of a wave energy converter using linear generator.	103
2. Buntara S. Gan, Kien Nguyen-Dinh, Mitsuharu Kurata, Eiji Nouchi, Dynamic reduction method for frame structures.	113
3. Nguyen Viet Khoa, Monitoring breathing cracks of a beam-like bridge subjected to moving vehicle using wavelet spectrum.	131
4. Chu Anh My, Vuong Xuan Hai, Generalized pseudo inverse kinematics at singularities for developing five-axes CNC machine tool postprocessor.	147
5. Do Sanh, Dinh Van Phong, Do Dang Khoa, Motion of mechanical systems with non-ideal constraints.	157
6. N. D. Anh, Weighted Dual approach to the problem of equivalent replacement.	169