

ON THE CP VIOLATION PHASE IN A NEUTRINO MIXING MODEL WITH AN A4 FLAVOR SYMMETRY

PHI QUANG VAN AND NGUYEN THI HONG VAN[†]
Institute of Physics, Vietnam Academy of Science and Technology

[†]*E-mail:* nhvan@iop.vast.vn

Received 09 March 2016

Accepted for publication 14 April 2016

Abstract. *Neutrino masses and mixing in an extended standard model acquiring an A4 flavor symmetry are considered. The corresponding three-neutrino mixing matrix obtained via a perturbative method allows us to determine the Dirac CP violation phase (δ_{CP}) as a function of the mixing angles ($\theta_{12}, \theta_{23}, \theta_{13}$). Then, numerical values and distributions of δ_{CP} are given. The latter values are quite close to the global fits of the experimental data for both the normal ordering and inverse ordering of the neutrino masses.*

Keywords: neutrino mass and mixing, flavor symmetries, models beyond the standard model.

Classification numbers: 14.60.Pq, 11.30.Fs, 12.60.-i.

I. INTRODUCTION

Standard model (SM) [1–4] has been confirmed as an excellent model of elementary particles and their interactions, especially after the discovery of the Brout-Englert-Higgs boson (Higg boson) by ATLAS and CMS [5, 6], which are the two biggest LHC collaborations (see [7] for a review on the discovering of the Higgs boson). The SM, however, cannot explain a number of phenomena including that of the neutrino masses and mixing [8, 9]. They, therefore, call for an extension of the SM. One of the extensions of the SM which has attracted great interest for last ten years is that with a flavor symmetry. A widely investigated flavor symmetry is based on the discrete group A4 (see, for example, [10, 11]). This symmetry can make a neutrino mixing scheme tribi-maximal (TBM). The recent experimental data [12, 13], however, shows that the mixing angle θ_{13} and the Dirac CP-violation phase (CPV) δ_{CP} are non-zero. That means that the TBM scheme is no longer valid. Consequently, many attempts to explain these new phenomena have been made. Here, in this paper, as reported in [14], we use a perturbation method to diagonalize a general neutrino mass matrix and obtain a Pontecorvo-Maki-Nakagawa-Sakata (PMNS) neutrino mixing matrix from which a relation between δ_{CP} and the mixing angles θ_{ij} can be derived. This relation

allows us, using experimental data of the mixing angles, to calculate δ_{CP} numerically, for both the normal ordering (NO) and inverse ordering (IO) of neutrino masses. This means that the present paper is an extended work of [14] in which only δ_{CP} for an NO was considered.

The plan of this paper is the following. In the next section we will make a quick introduction to the representations of A4 group and an A4-symmetric neutrino mass model. Section 3 deals with a perturbation approach to the problem of neutrino masses and mixing for this model, from where a mass spectrum and a relation between δ_{CP} and θ_{ij} can be obtained. Then, numerical values and distributions of δ_{CP} in both NO and IO are presented.

II. NEUTRINO MASS MODEL WITH AN A4 FLAVOR SYMMETRY

Quick introduction to representations of A4 group

Let us give a concise introduction to representations of A4 which are widely given in the literature (see, for example, [15, 16]). This group is composed of 12 elements and generated by two basic permutations S and T,

$$S^2 = T^3 = (ST)^3 = 1. \quad (1)$$

It has a three-dimensional unitary representation generated by

$$S = \begin{pmatrix} 1 & 0 & 0 \\ 0 & -1 & 0 \\ 0 & 0 & -1 \end{pmatrix}, \quad T = \begin{pmatrix} 0 & 1 & 0 \\ 0 & 0 & 1 \\ 1 & 0 & 0 \end{pmatrix}, \quad (2)$$

and three one-dimensional unitary representations 1 , $1'$ and $1''$ generated by

$$1: S = 1 \quad T = 1, \quad (3a)$$

$$1': S = 1 \quad T = e^{i2\pi/3} \equiv \omega, \quad (3b)$$

$$1'': S = 1 \quad T = e^{i4\pi/3} \equiv \omega^2. \quad (3c)$$

As in the case of an arbitrary group, applications of A4 often require to know the multiplication rule of its (irreducible) representations

$$1 \times 1 = 1, \quad 1' \times 1'' = 1, \quad 1'' \times 1' = 1, \quad 1' \times 1' = 1'', \quad 1'' \times 1'' = 1', \quad (4a)$$

$$3 \times 3 = 1 + 1' + 1'' + 3_1 + 3_2. \quad (4b)$$

Let us explain the rule (4b) in more details, while the first ones are trivial. For two triplets, say $3_a \sim (a_1, a_2, a_3)$ and $3_b \sim (b_1, b_2, b_3)$, their direct product can be decomposed into irreducible representations in the following way:

$$1 = a_1 b_1 + a_2 b_2 + a_3 b_3, \quad (5a)$$

$$1' = a_1 b_1 + \omega^2 a_2 b_2 + \omega a_3 b_3, \quad (5b)$$

$$1'' = a_1 b_1 + \omega a_2 b_2 + \omega^2 a_3 b_3, \quad (5c)$$

$$3_1 \sim (a_2 b_3, a_3 b_1, a_1 b_2), \quad (5d)$$

$$3_2 \sim (a_3 b_2, a_1 b_3, a_2 b_1). \quad (5e)$$

The information given here is used in constructing an A4-invariant action (Lagrangian) of the considered model, including the Yukawa terms (6).

The model generality

In principle, an A4 flavor symmetry can be applied to a neutrino mixing model with an arbitrary number of Majorana neutrinos but here we will consider, as an example, a model with three active Majorana neutrinos, for which the neutrino mass matrix is symmetric and parametrized by 6 independent parameters. Similar models have been studied widely before (see, for example, in [17–19]) but the main goal of this paper (and [14]) is to concentrate on considering the Dirac CPV phase (see also [20]). Besides the SM leptons transforming now also under A4 as a triplet (left-handed leptons l_L , $l = e, \mu, \tau$) or singlets (right-handed leptons e_R , μ_R and τ_R), the lepton sector of this model includes an A4 triplet N which is an $SU(2)_L$ singlet (right-handed neutrino). The scalar sector consists of the SM Higgs ϕ_h which is an A4 singlet, and five new $SU(2)_L$ -singlet scalars including two A4-triplets (denoted as ϕ_E , ϕ_N) and three A4-singlets (denoted as ξ , ξ' , ξ''). The A4- and $SU(2)_L$ transformation rules of the leptons and the scalars in the present model are listed in the table given below. It is enough for us to construct an A4-invariant Lagrangian.

Table 1. A4 and $SU(2)_L$ symmetry of leptons and scalars.

	l_L	e_R	μ_R	τ_R	N	ϕ_E	ϕ_N	ξ	ξ'	ξ''	ϕ_h
A4	3	1	1'	1''	3	3	3	1	1'	1''	1
$SU(2)_L$	2	1	1	1	1	1	1	1	1	1	2

The Lagrangian of the model includes the new Yukawa term

$$\begin{aligned}
 -\mathcal{L}_Y^{new} = & \lambda_e (\bar{l}_L \phi_h) e_R \frac{\phi_E}{\Lambda} + \lambda_\mu (\bar{l}_L \phi_h)'' \mu_R \frac{\phi_E}{\Lambda} + \lambda_\tau (\bar{l}_L \phi_h)' \tau_R \frac{\phi_E}{\Lambda} + \lambda_N \bar{l}_L \tilde{\phi}_h N \\
 & + c_N (\bar{N}^c N) \phi_N + c_\xi (\bar{N}^c N) \xi + c_{\xi'} (\bar{N}^c N)'' \xi' + c_{\xi''} (\bar{N}^c N)' \xi'' + H.c. \quad (6)
 \end{aligned}$$

From here, by denoting the VEVs of the scalars as

$$\langle \xi \rangle = u_a, \langle \xi' \rangle = u_b, \langle \xi'' \rangle = u_c, \langle \phi_E \rangle = (u_1, u_2, u_3), \langle \phi_N \rangle = (v_1, v_2, v_3), \langle \phi_h \rangle = v, \quad (7)$$

the mass matrix of the charged leptons has the form

$$M_{lept} = v \begin{pmatrix} \kappa_e u_1 & \kappa_e u_2 & \kappa_e u_3 \\ \kappa_\mu u_1 & \omega \kappa_\mu u_2 & \omega^2 \kappa_\mu u_3 \\ \kappa_\tau u_1 & \omega^2 \kappa_\tau u_2 & \omega \kappa_\tau u_3 \end{pmatrix}, \quad (8)$$

where

$$\kappa_e = \frac{\lambda_e}{\Lambda}, \kappa_\mu = \frac{\lambda_\mu}{\Lambda}, \kappa_\tau = \frac{\lambda_\tau}{\Lambda}. \quad (9)$$

To keep maximally the SM Higgs VEV structure, we can assume $\langle \phi_E \rangle = (u, u, u)$, thus, the charged lepton mass matrix becomes

$$M_{lept} = U_L \begin{pmatrix} y_e v & 0 & 0 \\ 0 & y_\mu v & 0 \\ 0 & 0 & y_\tau v \end{pmatrix} \equiv U_L \begin{pmatrix} m_e & 0 & 0 \\ 0 & m_\mu & 0 \\ 0 & 0 & m_\tau \end{pmatrix}, \quad (10)$$

where

$$U_L = \frac{1}{\sqrt{3}} \begin{pmatrix} 1 & 1 & 1 \\ 1 & \omega & \omega^2 \\ 1 & \omega^2 & \omega \end{pmatrix}, \quad (11)$$

$$y_e = u\kappa_e, y_\mu = u\kappa_\mu, y_\tau = u\kappa_\tau, \quad (12)$$

and m_e, m_μ, m_τ are the charged lepton masses.

In the neutrino subsector, we obtain the following Majorana mass matrix

$$M_N = \begin{pmatrix} c_a + c_b + c_d & \varepsilon_3 & \varepsilon_2 \\ \varepsilon_3 & c_a + \omega c_b + \omega^2 c_d & \varepsilon_1 \\ \varepsilon_2 & \varepsilon_1 & c_a + \omega^2 c_b + \omega c_d \end{pmatrix} \equiv \begin{pmatrix} a & b & c \\ b & e & d \\ c & d & f \end{pmatrix}, \quad (13)$$

where $c_a = c_\xi u_a, c_b = c_{\xi'} u_b, c_d = c_{\xi''} u_c, \varepsilon_1 = c_N v_1, \varepsilon_2 = c_N v_2, \varepsilon_3 = c_N v_3$, and Dirac mass matrix

$$M_D = \begin{pmatrix} \lambda_{N_1} v & 0 & 0 \\ 0 & \lambda_{N_2} v & 0 \\ 0 & 0 & \lambda_{N_3} v \end{pmatrix} \equiv \begin{pmatrix} x & 0 & 0 \\ 0 & y & 0 \\ 0 & 0 & z \end{pmatrix}. \quad (14)$$

The seesaw mechanism gives us the neutrino mass matrix,

$$M_\nu = -M_D^T M_N^{-1} M^D, \quad (15)$$

which, with (13) and (14) taken into account, can be written as

$$M_\nu = \frac{-1}{\det(M)} \begin{pmatrix} (d^2 - ef)x^2 & (-cd + bf)xy & (-bd + ce)xz \\ (-cd + bf)xy & (c^2 - af)y^2 & (-bc + ad)yz \\ (-bd + ce)xz & (-bc + ad)yz & (b^2 - ae)z^2 \end{pmatrix}, \quad (16)$$

with $\det(M) = 2bcd - c^2e - b^2f - a(d^2 - ef)$ being the determinant of M_N .

Diagonalizing a neutrino mass matrix, such as the one in (16), is often a difficult task. To solve this problem different methods and tricks have been proposed. Here we will use a perturbation approach to solving this problem.

III. NEUTRINO MIXING AND THE CP VIOLATION PHASE

Let us work in the basis where the lepton mass matrix is diagonal. In this basis M_ν becomes

$$\mathbb{M}_\nu = U_L^T M_\nu U_L \equiv \begin{pmatrix} A & B & C \\ B & E & D \\ C & D & F \end{pmatrix}. \quad (17)$$

The current experimental data have shown that the PMNS neutrino mixing matrix U_{PMNS} is a small deviation from the TBM form and we have (see [14] and also [21])

$$\mathbb{M}_\nu = M_0 + \lambda V, \quad (18)$$

with

$$M_0 = \begin{pmatrix} A & B & -B \\ B & E & -(A - E + B) \\ -B & -(A - E + B) & E \end{pmatrix}, \quad \lambda V = \begin{pmatrix} 0 & 0 & e_1 \\ 0 & 0 & e_3 \\ e_1 & e_3 & e_2 \end{pmatrix}, \quad (19)$$

where λ is a perturbation, i.e., small, parameter and M_0 is a non-perturbative (TBM level) mass matrix which can be diagonalized by the TBM neutrino mixing matrix

$$U_{TBM} = \begin{pmatrix} \sqrt{\frac{2}{3}} & \sqrt{\frac{1}{3}} & 0 \\ -\sqrt{\frac{1}{6}} & \sqrt{\frac{1}{3}} & \sqrt{\frac{1}{2}} \\ \sqrt{\frac{1}{6}} & -\sqrt{\frac{1}{3}} & \sqrt{\frac{1}{2}} \end{pmatrix} \times P \sim (|1^0\rangle, |2^0\rangle, |3^0\rangle) \times P, \quad (20)$$

as

$$\text{diag}(m_1^0, m_2^0, m_3^0) = U_{TBM}^\dagger M_0 U_{TBM}. \quad (21)$$

Here P is a matrix of Majorana phases which are not given explicitly because they play no role in the CP violation process. Using the perturbation expansion of the basis $|n\rangle$ around the non-perturbative one, $|n^0\rangle$,

$$|n\rangle = |n^0\rangle + \lambda \sum_{k \neq n} |k^0\rangle \frac{V_{kn}}{m_n^0 - m_k^0} + O(\lambda^2); \quad n, k = 1, 2, 3, \quad (22)$$

where

$$V_{kn} = \langle k | V | n \rangle, \quad (23)$$

we can diagonalize the matrix M_ν by the PMNS matrix

$$U_{PMNS} = \begin{pmatrix} \sqrt{\frac{2}{3}} + \sqrt{\frac{1}{3}}X & \sqrt{\frac{1}{3}} - \sqrt{\frac{2}{3}}X & -\sqrt{\frac{2}{3}}Y - \sqrt{\frac{1}{3}}Z \\ -\sqrt{\frac{1}{6}} + \sqrt{\frac{1}{3}}X + \sqrt{\frac{1}{2}}Y & \sqrt{\frac{1}{3}} + \sqrt{\frac{1}{6}}X + \sqrt{\frac{1}{2}}Z & \sqrt{\frac{1}{2}} + \sqrt{\frac{1}{6}}Y - \sqrt{\frac{1}{3}}Z \\ \sqrt{\frac{1}{6}} - \sqrt{\frac{1}{3}}X + \sqrt{\frac{1}{2}}Y & -\sqrt{\frac{1}{3}} - \sqrt{\frac{1}{6}}X + \sqrt{\frac{1}{2}}Z & \sqrt{\frac{1}{2}} - \sqrt{\frac{1}{6}}Y + \sqrt{\frac{1}{3}}Z \end{pmatrix} \times P + \Delta U, \quad (24)$$

where ΔU is a higher order perturbative correction to U_{PMNS} and

$$X = \frac{\sqrt{2}}{6} \left(\frac{2e_3 - e_1 - e_2}{m_1^0 - m_2^0} \right), \quad Y = \frac{\sqrt{3}}{6} \left(\frac{2e_1 + e_2}{m_1^0 - m_3^0} \right), \quad Z = \frac{1}{\sqrt{6}} \left(\frac{e_1 - e_2}{m_2^0 - m_3^0} \right). \quad (25)$$

Here we discuss only the CP-violation Dirac phase δ_{CP} , while the mass spectrum derived by the above-described diagonalization of the neutrino mass matrix M_ν is a subject of a future work because more analysis on the VEV's of the scalars and the Yukawa coupling coefficients as well as different phenomena and experimental results is needed. Since the CP violation is expected to be small the symmetric matrix \mathbb{M}_ν is near to a Hermitian matrix, therefore, the matrix (24) is near to an unitary one.

Denoting the matrix elements of (24) by U_{ij} , $i, j = 1, 2, 3$, we get the relation

$$U_{21} + \sqrt{2}U_{22} - U_{31} - \sqrt{2}U_{32} = 2U_{11} - \sqrt{2}U_{12} + \Delta U_{ij}, \quad (26)$$

where ΔU_{ij} is a higher order perturbative correction. Fitting the matrix (24) with the elements of the matrix U_{PMNS} in the canonical form

$$U_{PMNS} = \begin{pmatrix} c_{12}c_{13} & s_{12}c_{13} & s_{13}e^{-i\delta} \\ -c_{23}s_{12} - s_{13}s_{23}c_{12}e^{i\delta} & c_{23}c_{12} - s_{13}s_{23}s_{12}e^{i\delta} & s_{23}c_{13} \\ s_{23}s_{12} - s_{13}c_{23}c_{12}e^{i\delta} & -s_{23}c_{12} - s_{13}c_{23}s_{12}e^{i\delta} & c_{23}c_{13} \end{pmatrix} \times P, \quad (27)$$

where $s_{ij} = \sin \theta_{ij}$, $c_{ij} = \cos \theta_{ij}$; $i, j = 1, 2, 3$, we obtain from (26) the following relation between $\delta_{CP} \equiv \delta$ and the mixing angles θ_{ij} :

$$\cos \delta \tan \theta_{13} = \frac{(\sqrt{2} - \tan \theta_{12})}{(1 + \sqrt{2} \tan \theta_{12})(1 - \tan \theta_{23})} \left(\frac{\sqrt{2}}{c_{23}} - \frac{1 + \tan \theta_{23}}{c_{13}} \right). \quad (28)$$

Solving (28) for $\delta \in [0, 2\pi]$ we can get two solutions: if a value δ_0 is a solution of (28), the value $2\pi - \delta_0$ is the other solution. Therefore, we can choose to discuss one of these solutions, for example, the bigger one.

In general, both theoretically and experimentally, it is not very easy to find δ_{CP} but the relation (28) allows us to determine δ_{CP} numerically via the experimental data on the mixing angles θ_{ij} . The distributions of δ_{CP} are plotted in Fig. 1 and Fig. 2 for a normal- and an inverse-ordering. Here, a value of δ_{CP} is calculated event by event using equation (28) with the value of $\sin \theta_{ij}$ taken randomly (within 3σ range) based on a Gaussian distribution having the mean and the standard deviation (σ) to be the best fit value and the sigmas, respectively, of $\sin \theta_{ij}$ determined experimentally and given in [12, 13]. These figures show that δ_{CP} distributes in the region $3.1 < \delta_{CP} < 5.8$ (for an NO) and $3.1 < \delta_{CP} < 6.3$ (for an IO). This distributions have a mean value at $\delta_{CP} = 4.28$ (for an NO) and at $\delta_{CP} = 4.56$ (for an IO) which is close, between 1σ , to the global fit values (GFV's) to the experimental data and have a maximum density around $\delta_{CP} = 4.45$ (for an NO) and $\delta_{CP} = 4.55$ (for an IO) between 1σ region from the GFV [12, 13]. For more information, δ_{CP} versus $\sin^2 \theta_{13}$ are depicted in Fig. 3 for an NO and in Fig. 4 for an IO.

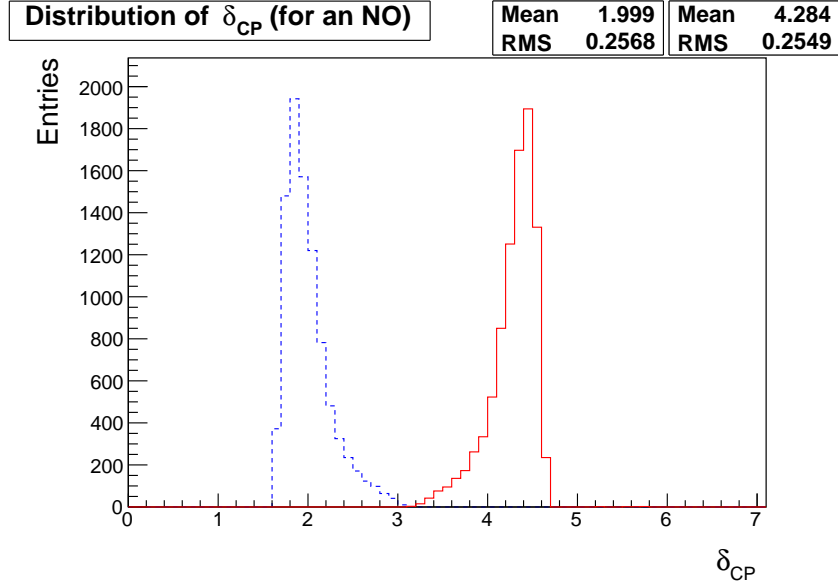


Fig. 1. Distribution of δ_{CP} for a normal ordering.

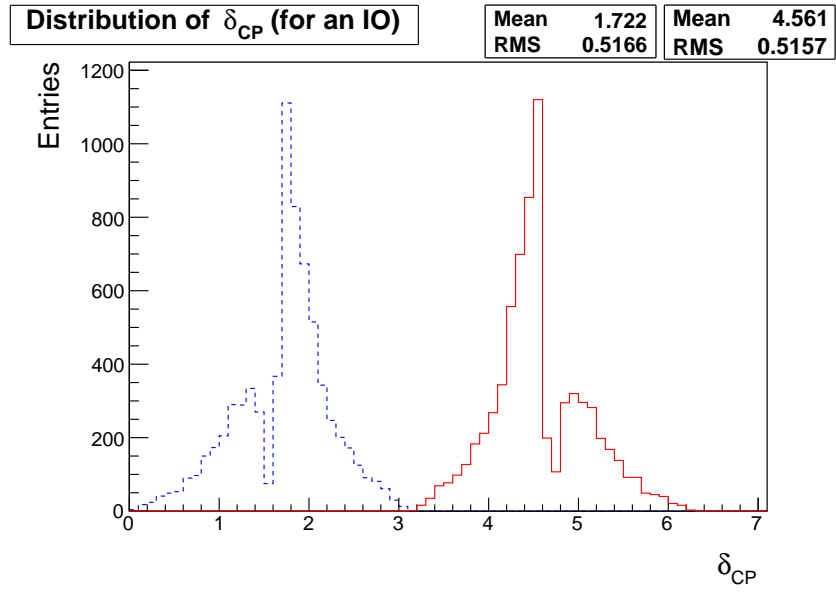


Fig. 2. Distribution of δ_{CP} for an inverse ordering.

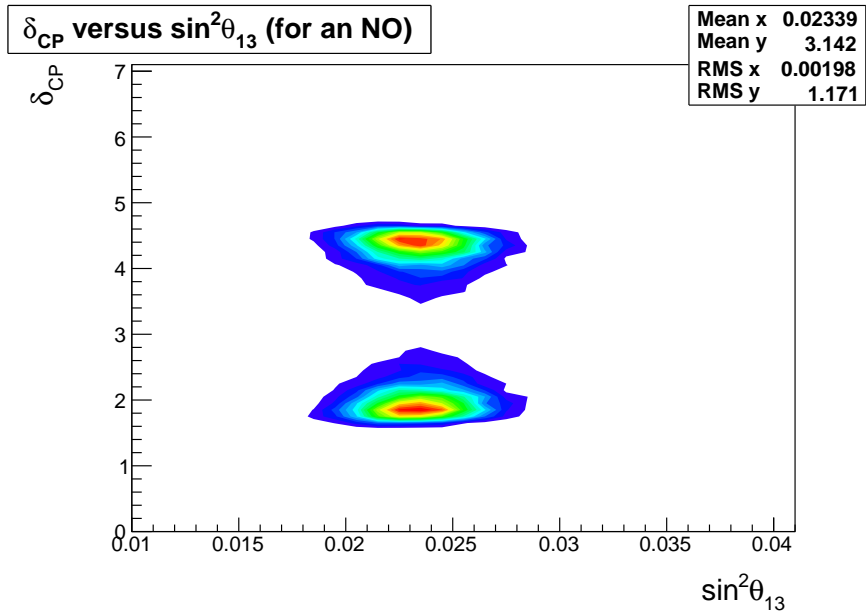


Fig. 3. δ_{CP} versus $\sin^2\theta_{13}$ for a normal ordering.

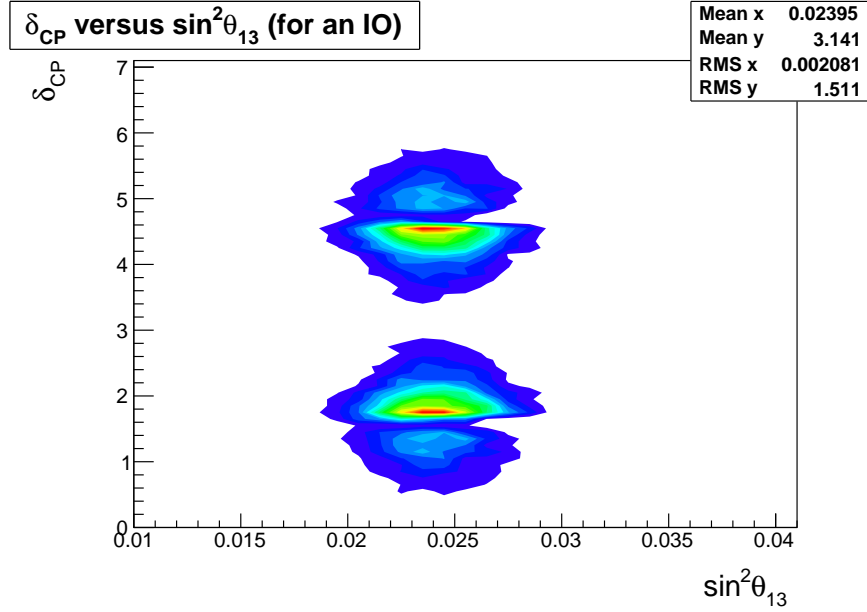


Fig. 4. δ_{CP} versus $\sin^2 \theta_{13}$ for an inverse ordering.

IV. CONCLUSION

A model of neutrino mass and mixing with an A4 flavor symmetry is considered. The mass matrix is diagonalized and the mixing matrix is found by using a perturbation method. Then, a relation between the CP-violation Dirac phase δ_{CP} and the mixing angles θ_{ij} can be established. It allows us to determine δ_{CP} via the experimental data on θ_{ij} . The result is quite good (near the 1σ region of the global fit) for both the normal- and inverse- ordering of the neutrino masses [12, 13], therefore, the neutrino mass and mixing matrices are more explicitly fixed.

In this paper a first order perturbation is used but a higher order perturbation is also being considered.

ACKNOWLEDGMENT

This work is supported by Vietnam's National Foundation for Science and Technology Development (NAFOSTED) under the grant No 103.03-2012.49. The authors would like to thank Dinh Nguyen Dinh and Nguyen Anh Ky for useful discussions and collaboration, and Nguyen Anh Ky for reading the manuscript and comments.

REFERENCES

- [1] H. K. Quang and P. X. Yem, *Elementary Particles and Their Interactions: Concepts and Phenomena*, Springer-Verlag, Berlin, 1998.
- [2] D. J. Griffiths, *Introduction to Elementary Particles*, John Wiley & Sons, New York, 1987.
- [3] T. P. Cheng and L.F. Li, *Gauge theory of elementary particle physics*, Oxford university press, Oxford, 2006.

- [4] M. E. Peskin and D. V. Schroeder, *An introduction to quantum field theory*, Addison-Wesley publishing company, Reading, Massachusetts, 1995.
- [5] ATLAS Collaboration, G. Aad *et al.*, *Phys. Lett. B* **716** (2012) 1, arXiv:1207.7214 [hep-ex].
- [6] CMS Collaboration, S. Chatrchyan *et al.*, *Phys. Lett. B* **716** (2012) 30, arXiv:1207.7235 [hep-ex].
- [7] Nguyen Anh Ky and Nguyen Thi Hong Van, *Commun. Phys.* **25** (2015) 1, arXiv:1503.08630 [hep-ph].
- [8] S. Bilenky, *Introduction to the physics of massive and mixed neutrinos*, Berlin: Springer, 2010.
- [9] C. Giunti, C. W. Kim, *Fundamentals of neutrino physics and astrophysics*, New York: Oxford university Press, 2007.
- [10] G. Altarelli, F. Feruglio and L. Merlo, *Fortsch. Phys.* **61** (2013) 507, arXiv:1205.5133 [hep-ph].
- [11] P. M. Ferreira, L. Lavoura and P. O. Ludl, *Phys. Lett. B* **726** (2013) 767, arXiv:1306.1500 [hep-ph].
- [12] K. A. Olive *et al.*, *Review of Particle Physics*, (Particle Data Group Collaboration) *Chin. Phys. C* **38** (2014) 090001.
- [13] F. Capozzi, G. L. Fogli, E. Lisi, A. Marrone, D. Montanino and A. Palazzo, *Phys. Rev. D* **89** (2014) 093018, arXiv:1312.2878 [hep-ph].
- [14] D. N. Nguyen Dinh, N. Anh Ky, P. Quang Văn and N. T. Hồng Vân, *J. Phys. Conf. Ser.* **627** (2015) 1, 012003.
- [15] G. Altarelli, F. Feruglio, L. Merlo and E. Stamou, *JHEP* **1208** (2012) 021, arXiv:1205.4670 [hep-ph].
- [16] S. F. King and C. Luhn, *Rept. Prog. Phys.* **76** (2013) 056201, arXiv:1301.1340 [hep-ph].
- [17] H. Ishimori and E. Ma, *Phys. Rev. D* **86** (2012) 045030, arXiv:1205.0075 [hep-ph].
- [18] E. Ma, A. Natale and A. Rashed, *Int. J. Mod. Phys. A* **27** (2012) 1250134, arXiv:1206.1570 [hep-ph].
- [19] M. Honda and M. Tanimoto, *Prog. Theor. Phys.* **119** (2008) 583, arXiv:0801.0181 [hep-ph].
- [20] Dinh Nguyen Dinh, Nguyen Anh Ky, Phi Quang Văn and Nguyen Thi Hong Vân, arXiv:1602.07437 [hep-ph].
- [21] B. Brahmachari and A. Raychaudhuri, *Phys. Rev. D* **86** (2012) 051302, arXiv:1204.5619 [hep-ph].

